



**Droit Steel Buildings** P. Ltd, is an organization known for its futuristic approach and quality products. We are into manufacturing of Pre engineered Steel Buildings & Roofing Sheets. We have been in the industry for 11 years and are the biggest PEB manufacturer in Eastern India, with an installed capacity of 50000 MT.

We understand how important it is for the customer to focus on his core business. Thus to serve this purpose we as a professional PEB Company, take up the responsibility of steel building construction as per the specification set by the client.

All our products are manufactured at our factory in Bishnupur (West Bengal) supported by our own design and engineering team. Our experienced teams of engineers are well versed with customized designing of complex buildings with optimum material. We also provide best technical advice to suit our customer requirements. Our talented execution team renders assistance at every stage of the project and delivers it as per the specifications.



## Building a Lifeline of tomorrow

Our range of Steel Buildings and Roofing and other related products have been the preferred brand for a large number of corporate and government institution. Our products have found its application in major market segments including Heavy & Medium Industries, Retail & Logistics, Automobile, General Engineering, Infrastructure, Commercial / High-Rise Buildings, and Warehouse. It is because of our focus on quality and the way we serve our customer we have been able to receive patronage of customers like the Indian Railways, MES, PWD etc.





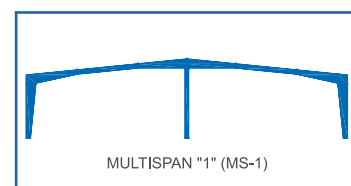
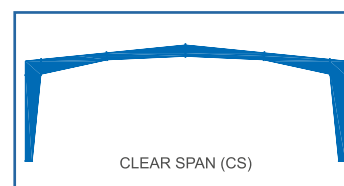
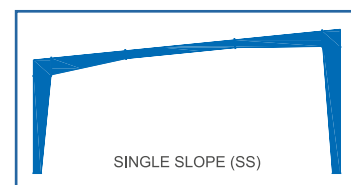
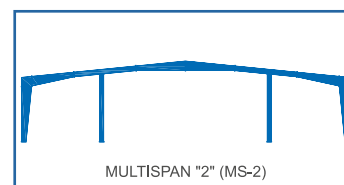
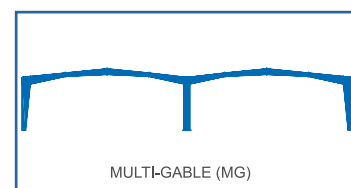
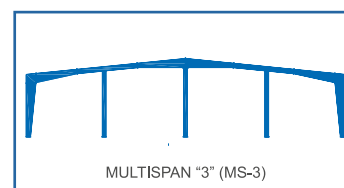
# Droit Pre-engineered Steel Building System

Offers customers freedom from complexity of building a shed. It offers one stop solution to its client, starting from designing to commissioning. Droit's team of professional engineers provide its customers economical and durable building solutions. Customers can focus on their core business once they handover their building's construction responsibility to Droit.

Our buildings are designed using the latest national & international design code & standards for the most optimized functionalities. We use high-grade steel products with full traceability, which goes through QC before production. The manufacturing facility confirms to the IS welding codes & quality assurance plans. The dedicated team of logistic partners ensures on time delivery & Our technical execution team ensures timely & safe commissioning of Droit Buildings. Droit building system uses Durakolor roofing & cladding products as well as Durakolor purlins and girts.

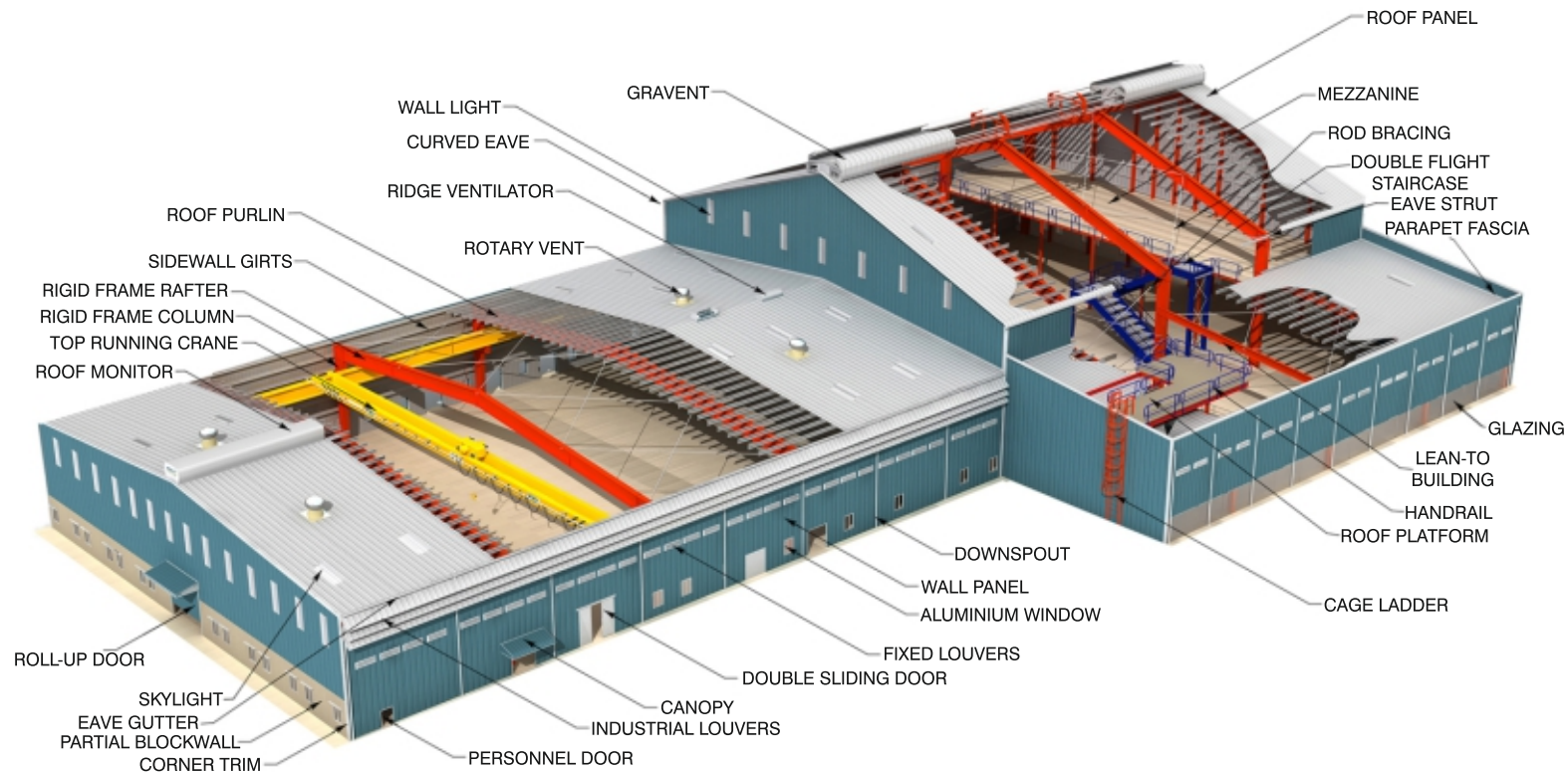
## Advantage

- Single Source Responsibility
- Reduced Construction Time
- Larger Spans
- Quick & Easy Installation
- Economical
- Quality Controlled Product
- Aesthetically Appealing
- Energy Efficient Roofing & Cladding System
- Environment Friendly – Recyclable Product
- Flexibility of Expansion
- Practically Maintenance Free





# Pre-Engineered Building System



Pre-engineered steel buildings are designed and fabricated to client's specific requirements in accordance with the industry relevant standards. A Pre-engineered steel building consists of four major groups of components viz. primary members, secondary members, metal roofing/wall cladding and connection fasteners. These components work compatibly together to produce the most optimal and economic design. The fabrication / roll-forming of these components are carried out in our factory under strict quality control. These are assembled and erected at site to give an aesthetically pleasing building.

## Droit – Lite

Is a unique light weight steel building system suitable for small sheds, residential houses, site offices, schools, hospitals, roof top sheds etc. These sheds are made from high strength cold formed steel sections which are pre-galvanized, making them more durable. Buildings made from this system are fire resistant and strong.

It uses Durakolor Roofing & Cladding System for longer life. The installation system is very easy as all components & parts are marked and are assembled using only nuts and bolts. It can be installed even by less skilled workers. It is light weight, thus it saves foundation cost and it is easy to transport even to remote areas.



### Advantage

- Light Weight & Strong
- Non Toxic & Non Organic
- Fire Resistant
- Earth Quake Resistant
- Durable
- Quick & Easy Installation
- Easy to transport
- Aesthetically pleasing
- Reduced Construction Time & Cost

## Durakolor Roofing & Cladding

Droit Steel Buildings are complemented by its own “Durakolor” range of roofing and cladding systems. We use the time-tested technology of galvalume, which contains 55% Aluminium 43.5% Zinc. The sheets are made from high tensile steel, which are then coated with super durable VXP paint. It is designed to withstand some of the harshest climatic and industrial conditions. Client can choose from our various profiles below and also choose aluminium or stainless steel as the base material.



AT OVERLAP POSITION

AT SEAM LOCK POSITION



### Dura Seam

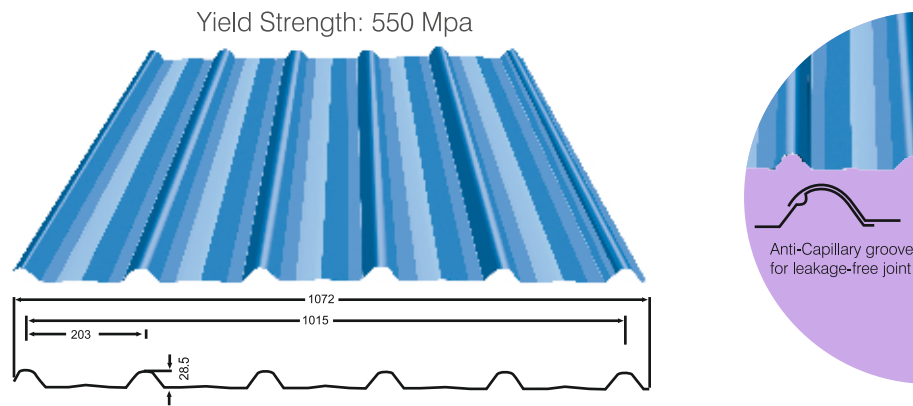
### benefits

Dura Seam - Standing seam roofing is the latest roofing technology introduced by us. It is the screw less or hole free system where clips, which are screwed to the purlin. These clips are then seamed along with the roofing sheet. As the roofing machine goes to the site there is no limit to the length of sheet that can be made. [Click here to know more.](#)



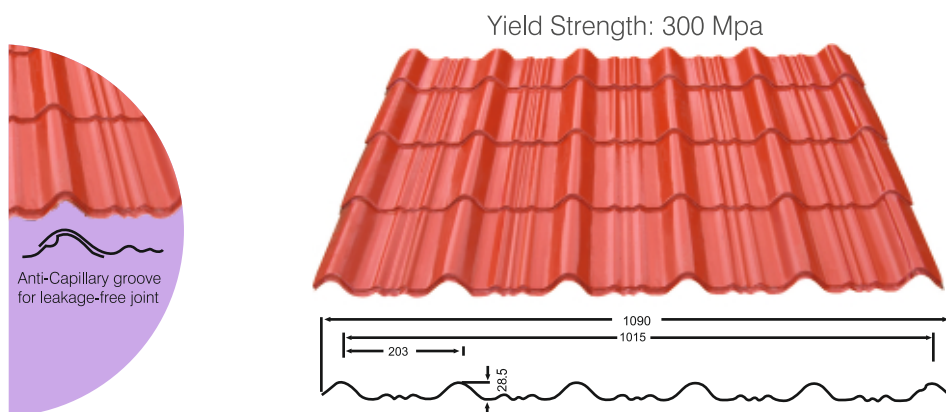
# Durakolor Roof

Durakolor Roof is our standard product for roofing and cladding it is the most popular profile worldwide. It has been uniquely designed to withstand adverse atmospheric conditions and allow bigger purlin spacing. It can be supplied in lengths upto 12 mtr to minimize the number of overlaps.



# Durakolor Tile

Durakolor tile is aesthetically the number one choice of our customer; it resembles the shape of clay tiles used in residential structure. It is preferred by individual house builders and architects to give their shed a more rustic and homely look.



## Base Material Option

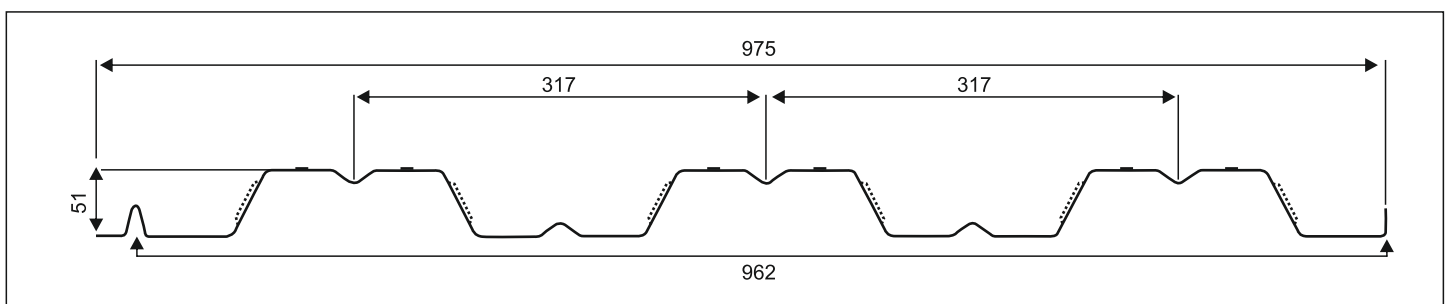
- Galvalume
- Aluminium
- Stainless Steel

## Insulation Options

- PUF Panel
- Glasswool
- Rockwool
- Bubble Wrap
- XLPE etc.

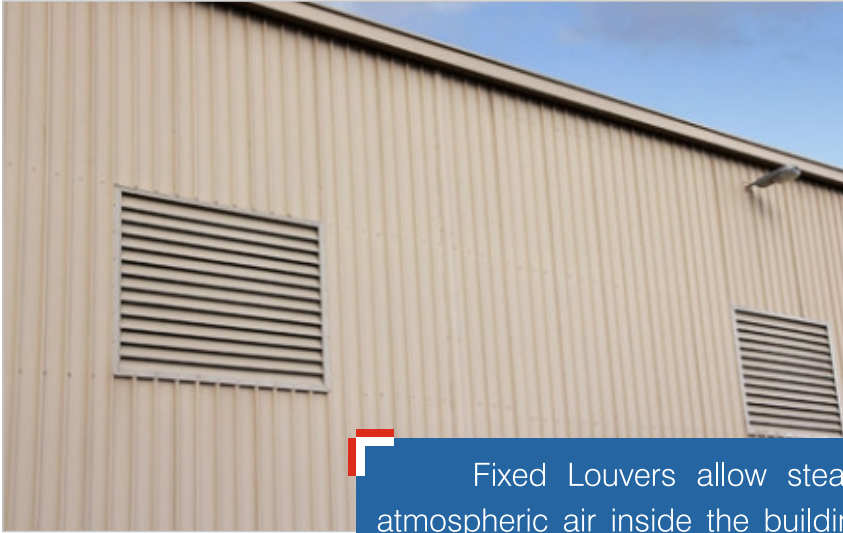
Deck Sheets are composite decking sheet which acts as permanent shuttering over which RCC floor are casted. This system save time and require less reinforcement steel and mortar. The best part is that with RCC on the top gives the client the option to finish it with any type of flooring material viz marble, cotta stone, tiles, epoxy, wood etc.

## Droit Deck Sheet



Total Coated Thickness\* 0.80 to 1.50mm

z prlin c purlin



### Fixed Louvers

Fixed Louvers allow steady inflow of cooler atmospheric air inside the buildings. They are made from the same color coated material as used in the cladding sheet and are aesthetically very good-looking. It is very lightweight and easy to install.

### Ridge Vents



Ridge Vents are smaller form of roof monitor. It comes in the standard throat size of 600 mm and 3000 mm length. It can be installed at regular interval or continuously at the ridgeline of sheds it can achieve upto 15 air changes per hour.

Roof Monitor

Industrial Louver

Lifeline etc

Cage Ladders

Skylight



## Facility & Technology

We are the Biggest PEB Manufacturer in Eastern India. All our products are manufactured at our factory in Bishnupur. We have adopted the best technology and machines. We use the latest software to give us more accurate building structure. We as an organization strive for 'Zero Defect' in our projects. We have the best machine viz.

Twin Wire SAW H Beam Machine- it is the best machine for H Beam welding it is the only machine which permit Sub merged Arc Welding on light weight H Beams. It uses 4 wires (2 on each side) and simultaneously welds the same at speeds of upto 2 mtr /min.

Multi torch CNC Plasma Cutting Machine – It is the fastest cutting machine which we have specially developed. It has multiple torches which further multiplies its production capacity. The CNC system enables it to cut directly from drawing software with accuracy.

Latest BIM Software – We use latest BIM (Building Information Modeling) Software, which enables us to make accurate buildings in three dimensions. The detailing done in our software are 100% accurate and information flow in also not diluted.



## Quality & Customer Service

Droit Steel Buildings team has forever kept Quality as its prime focus. It enables us to deliver and serve our customers to their fullest satisfaction. Our buildings are designed and detailed into smaller parts, which are marked at factory making it easy to identify and assemble at site. We are a ISO 9001 certified company. We have adopted a comprehensive quality assurance plan complying with international standards.

### Feature:

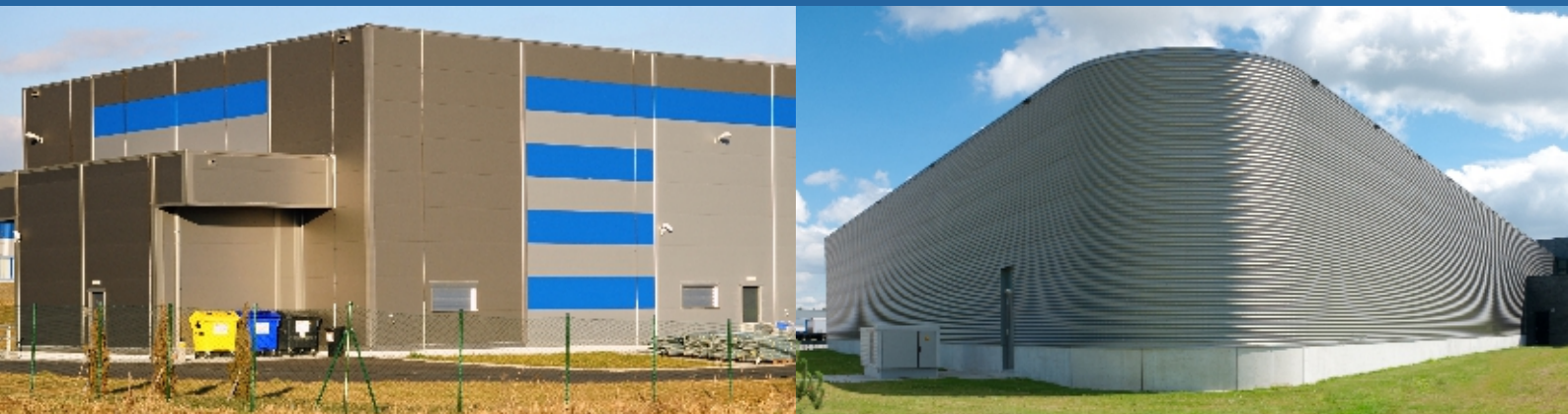
- Standard Operational Procedures
- Raw Material Inspection & Traceability
- Job tracking
- Job Scheduling
- Inspection during production
- Non-Destructive Tests
- Pre Dispatch Inspection
- Standard Execution Procedures
- On-time delivery
- Customer Care Department



## Our Clients



**Customer Care : +91 900 789 1111**



### **Corporate Office**

**Droit Steel Buildings Private Limited**

3A, Ram Mohan Mullick Garden Lane, Raikva Building, 4th Floor Unit - 4, Kolkata-700 010, (India)  
Phone: +91 33 66044777 | +91 33 23741999, [info@droitsteelbuildings.com](mailto:info@droitsteelbuildings.com) | [info@durakolor.com](mailto:info@durakolor.com)

### **Works**

**Droit Steel Buildings Private Limited**

Vill. - Shyamsundarpur, PO - Darika, PS. - Bishnupur, Dist. - Bankura, PIN - 722 122  
Phone: +91 9007881111 | [factory@durakolor.com](mailto:factory@durakolor.com)

**Toll Free: 1800 345 01 01**