





Droit Steel Buildings Pvt. Ltd. is an organization known for its futuristic approach and quality products. We are into manufacturing of Pre engineered Steel Buildings & Roofing Sheets. We have been in the industry for more than 15 years and are the biggest PEB manufacturer in Eastern India, with an installed capacity of 50000 MT.

We understand how important it is for the customer to focus on his core business. Thus to serve this purpose we as a professional PEB Company, take up the responsibility of steel building construction as per the specification set by the client.

All our products are manufactured at our factory in Bishnupur (West Bengal) supported by our own design and engineering team. Our experienced team of engineers are well versed with customized designing of complex buildings with optimum material. We also provide best technical advice to suit our customer requirements. Our talented execution team renders assistance at every stage of the project and delivers it as per the specifications.



Building a Lifeline of tomorrow

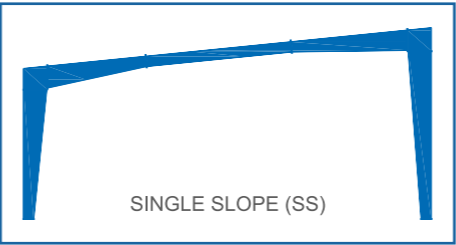
Our range of Steel Buildings, Roofings and other related products have been the preferred brand for a large number of corporate and government institution. Our products have found its application in major market segments including Medium to Heavy Industries, Retail, Logistics, Automobile, General Engineering, Infrastructure, Commercial Buildings, High-Rise Buildings and Warehouse. It is because of our focus on quality and the way we serve our customer we have been able to receive patronage of customers like the Indian Railways, MES, PWD etc.



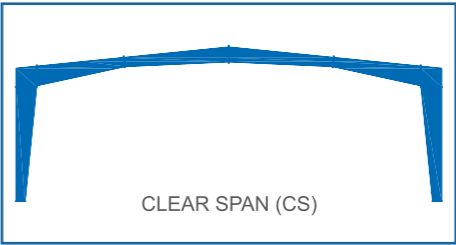
Droit Pre-Engineered Steel Building System

Offers customers freedom from complexity of building a shed. It offers one stop solution to its client, starting from designing to commissioning. Droit's team of professional engineers provide its customers economical and durable building solutions. Customers can focus on their core business once they handover their building's construction responsibility to Droit.

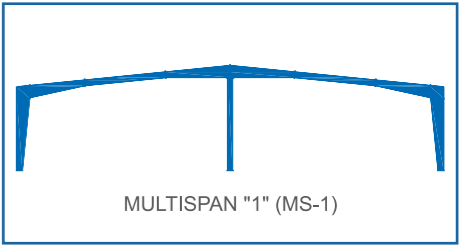
Our buildings are designed using the latest national & international design code & standards for the most optimized functionalities. We use high-grade steel products with full traceability, which goes through QC before production. The manufacturing facility confirms to the IS welding codes & quality assurance plans. The dedicated team of logistic partners ensures on time delivery & Our technical execution team ensures timely & safe commissioning of Droit Buildings. Droit building system uses its own Durakolor roofing & cladding products as well as Durakolor purlin and girts.



SINGLE SLOPE (SS)



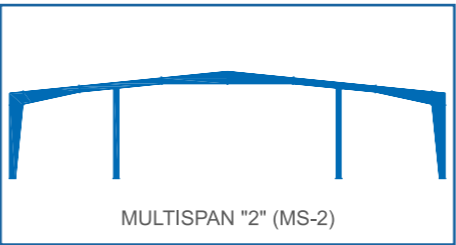
CLEAR SPAN (CS)



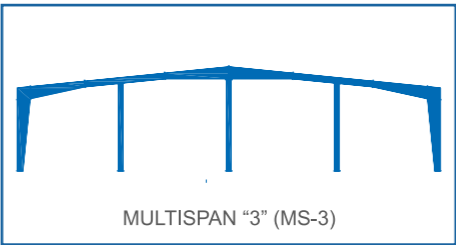
MULTISPAN "1" (MS-1)

Advantage

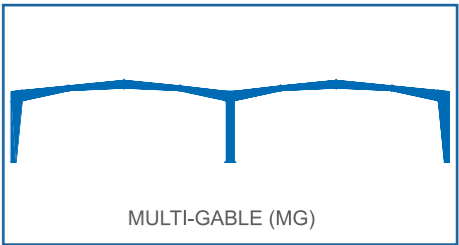
- Single Source Responsibility
- Reduced Construction Time
- Larger Spans
- Quick & Easy Installation
- Economical
- Quality Controlled Product
- Aesthetically Appealing
- Energy Efficient Roofing & Cladding System
- Environment Friendly – Recyclable Product
- Flexibility of Expansion
- Practically Maintenance Free



MULTISPAN "2" (MS-2)

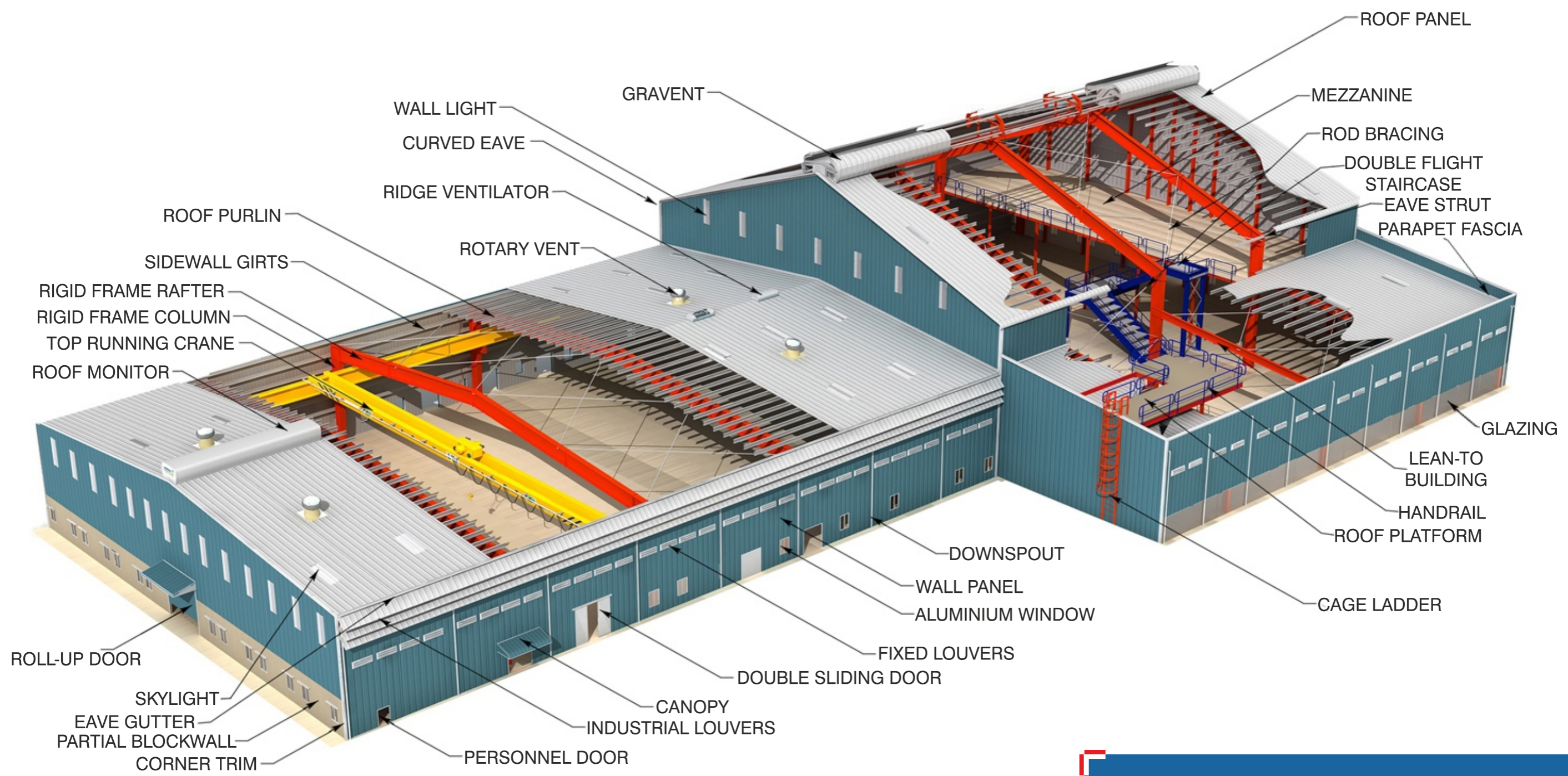


MULTISPAN "3" (MS-3)



MULTI-GABLE (MG)

Pre-Engineered Building System



Pre-engineered steel buildings are designed and fabricated to client's specific requirements in accordance with the industry relevant standards. A Pre-engineered steel building consists of four major groups of components viz. primary members, secondary members, metal roofing/wall cladding and connection fasteners. These components work compatibly together to produce the most optimal and economic design. The fabrication / roll-forming of these components are carried out in our factory under strict quality control. These are assembled and erected at site to give an aesthetically pleasing building.

Droit - Lite

Is a unique lightweight steel building system suitable for small sheds, residential houses, site offices, schools, hospitals, roof top sheds etc. These sheds are made from high strength cold formed steel sections which are pre-galvanized, making them more durable. Buildings made by using this technology are fire resistant and strong. We give client multiple cladding options to suit their aesthetic & functional requirement.



Advantage

- Light Weight & Strong
- Non Toxic & Non Organic
- Fire Resistant
- Earth Quake Resistant
- Durable
- Quick & Easy Installation
- Easy to transport
- Aesthetically pleasing
- Reduced Construction Time & Cost

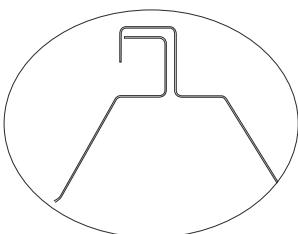
Dura Seam

Standing seam roofing is the latest roofing technology introduced by Droit Steel Buildings. It is a concealed screw, hole free system, where specially designed clips are screwed to the purlin, which are seamed together with the adjoining roofing panel using their male and female ends. In this system the roofing sheets exposed to the atmosphere are not pierced hence customer gets a leak proof roof.

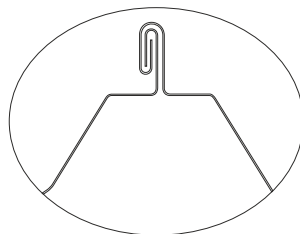
This interlocking standing seam on the side laps increases the life of the roof, as there is no external protrusion, on the original factory finish of the coated roofing sheet. Our machines are mobile and it goes to the site, thus there is no limit to the length of sheet that can be made. Customers can get a single sheet from the Ridge to Gutter.



AT OVERLAP POSITION



AT 360° SEAM LOCK POSITION

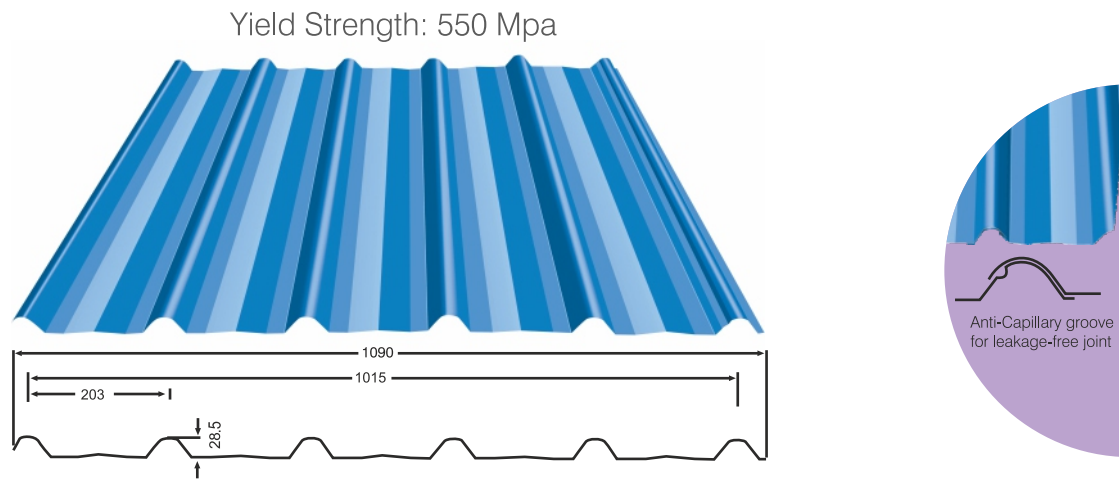


Advantage

- Leak Proof
- Large Spanning
- Low Slope Compatible
- High Strength
- Onsite Profiling
- No Maintenance Cost
- Aesthetically Pleasing

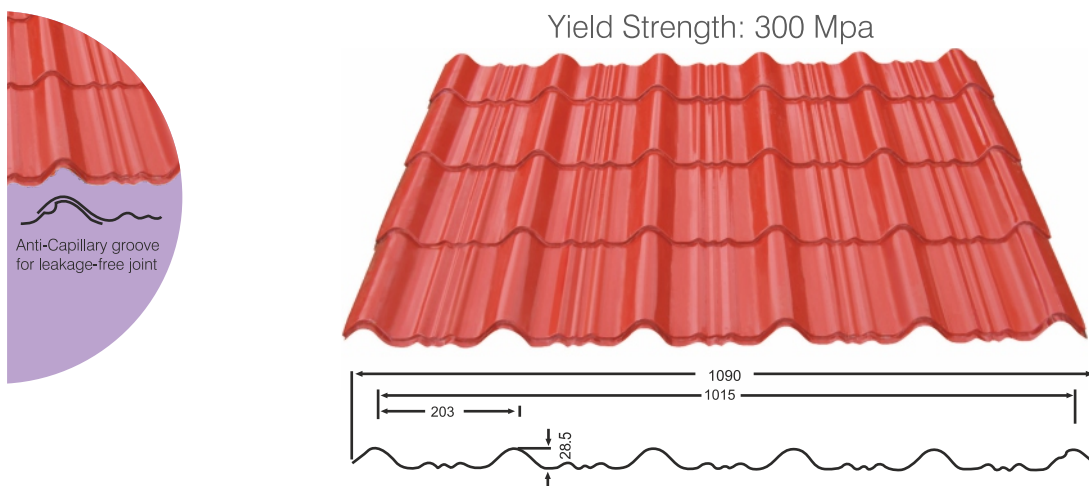
Durakolor Roof

Durakolor Roof is our standard product for roofing and cladding it is the most popular profile worldwide. It has been uniquely designed to withstand adverse atmospheric conditions and allow bigger purlin spacing.



Durakolor Tile

Durakolor tile is aesthetically the number one choice of our customer; it resembles the shape of clay tiles used in residential structure. It is preferred by individual house builders and architects to give their shed a more rustic and homely look.



Base Material Option

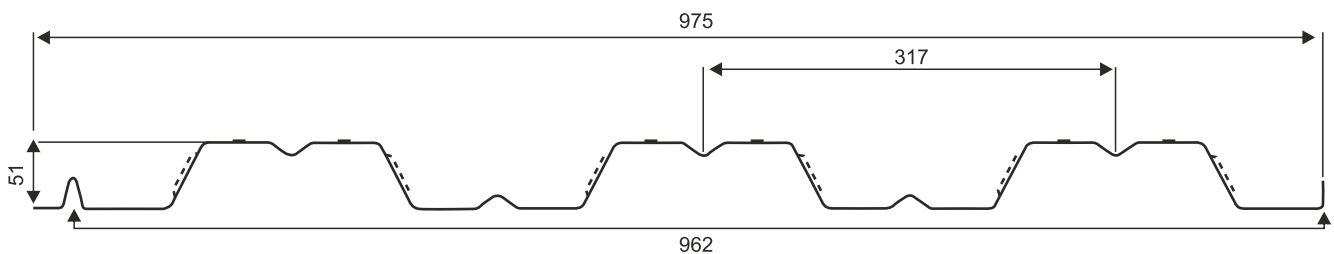
- Galvalume
- Aluminium
- Stainless Steel

Insulation Options

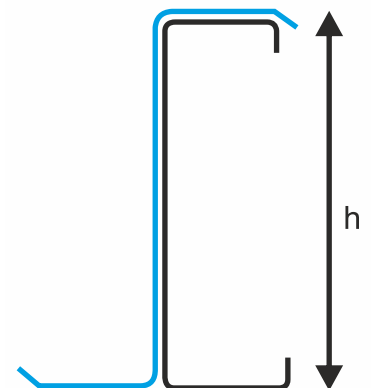
- PUF Panel
- Glasswool
- Rockwool
- Bubble Wrap
- XLPE etc.

Droit Deck Sheet

Deck Sheets are structural formwork which acts as a permanent shuttering under RCC floor and provides a safe and stable working platform. By using deck sheet client saves on the cost of reinforcement, mortar labour and time.



Total Coated Thickness* 0.80 to 1.50mm

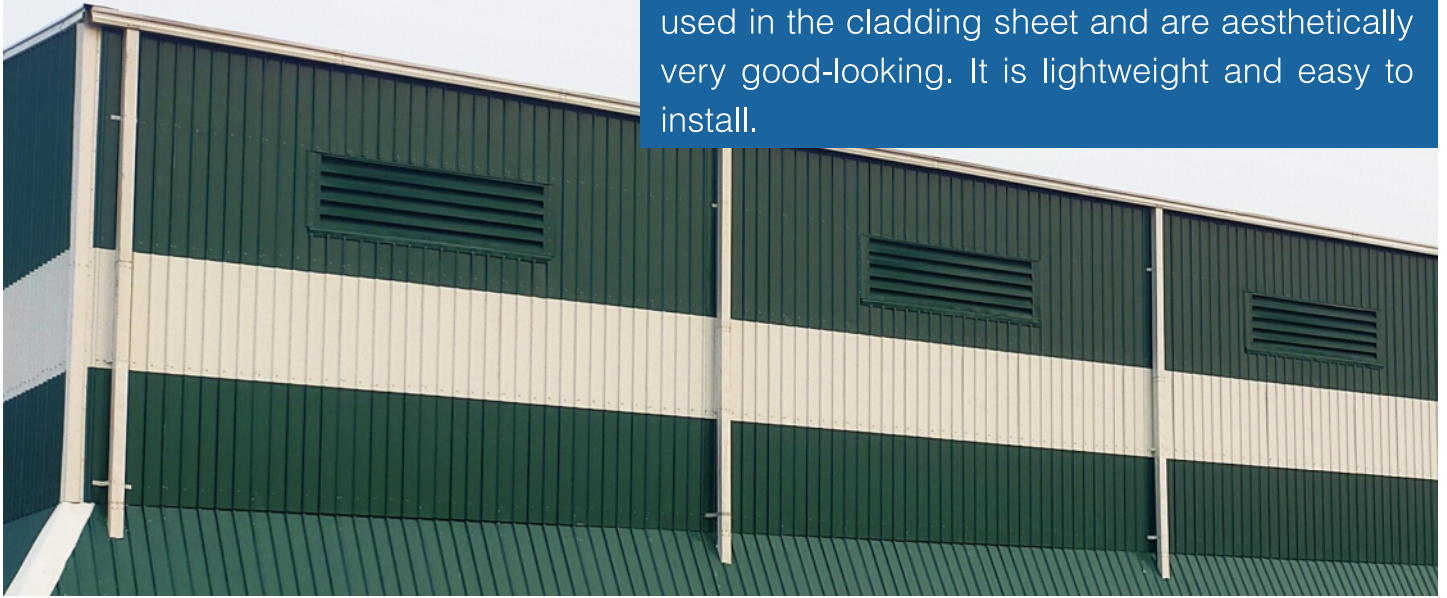


Durakolor Z & C Purlin

Z & C Purlin are light weight yet much stronger than conventional structural purlins, our purlins are made in custom lengths and are pre punched so that its get easily installed at site without fabrication.

Fixed Louvers

Fixed Louvers allow steady inflow of cooler atmospheric air inside the buildings. They are made from the same color coated material as used in the cladding sheet and are aesthetically very good-looking. It is lightweight and easy to install.



Ridge Vents

Ridge Vents are smaller form of roof monitor. It comes in the standard throat size of 600 mm and 3000 mm length. It can be installed at regular interval or continuously at the ridgeline of sheds. It can achieve upto 15 air changes per hour.



Roof Monitor



Industrial Louvers



Quality & Customer Service

Droit Steel Buildings team has forever kept Quality as its prime focus. It enables us to deliver and serve our customers to their fullest satisfaction. Our buildings are designed and detailed into smaller parts, which are marked at factory making it easy to identify and assemble at site. We are an ISO 9001 certified company. We have adopted a comprehensive quality assurance plan complying with international standards.

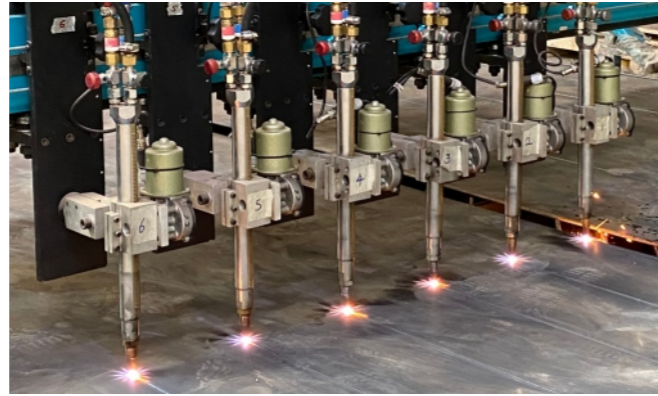
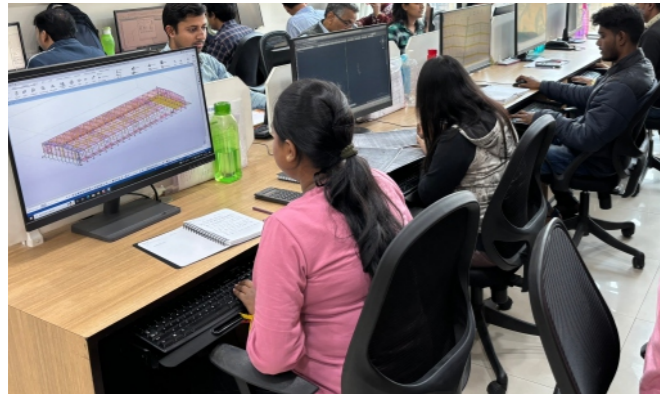


Feature

- Standard Operational Procedures
- Raw Material Inspection & Traceability
- Job tracking
- Job Scheduling
- Inspection during production
- Non-Destructive Tests
- Pre Dispatch inspection
- Standard Execution Procedures
- On-time delivery
- Customer Care Department



Facility & Technology



We are the **Biggest PEB Manufacturer in Eastern India**. All our products are manufactured at our factory in Bishnupur. We have adopted the best technology and machines. We use the latest software to give us more accurate building structure. We as an organization strive for 'Zero Defect' in our projects. We have the best machine viz.

Twin Wire SAW H Beam Machine- it is the best machine for H Beam welding it is the only machine which permit Sub merged Arc Welding on light weight H Beams. It uses 4 wires (2 on each side) and simultaneously welds the same at speeds of upto 2 mtr /min.

Multi torch CNC Plasma Cutting Machine – It is the fastest cutting machine which we have specially developed. It has multiple torches which further multiplies its production capacity. The CNC system enables it to cut directly from drawing software with accuracy.

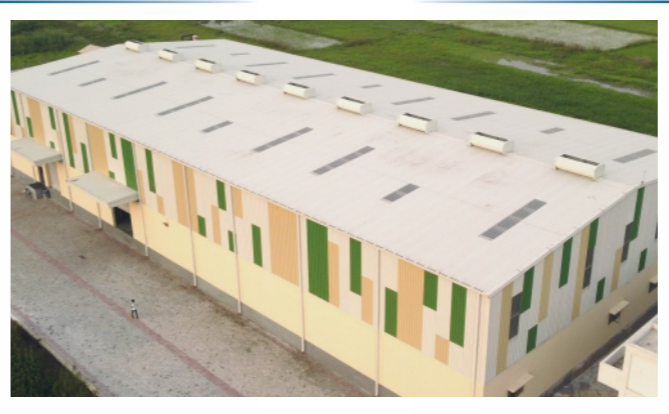
Latest BIM Software – We use latest BIM (Building Information Modeling) Software, which enables us to make accurate buildings in three dimensions. The detailing done in our software are 100% accurate and information flow in also not diluted.



Satguru Saburi - Dankuni



Arunil Polymers - Domjur



Rawalwasia MCKV - Srirampur



Sravasti Warehouse - Singur



Our Projects



LG Electronics - Hooghly



Shyam steel - Mejia



HP Petrol Pump - Bardhaman



More Hypermart _ Bardhaman



Tata Commercial Vehicle - Siliguri



Gati - Srerampur



Super Iron Foundry - Durgapur



Ecotech AAC Block - Agartala



Our Projects



MKL Polycoat - Singur



Ashirvad Pipes - Panagarh



PSPL - Jamshedpur



Sobisco - Hazipur



Gloster Nuvo Ltd- Bauria



CRL Project - Joka



Iron Mountain - Singur



SRMB - Durgapur

Our Clients



Ease of Ordering

Clients following the steps below find it easy to get their desired pre engineered buildings, to support them further we offer our clients a questionnaire relating to their building wherein they specify

Dimension like length, breadth, height

Loads of Equipment, material, people

Ventilation as per occupancy and heat generation

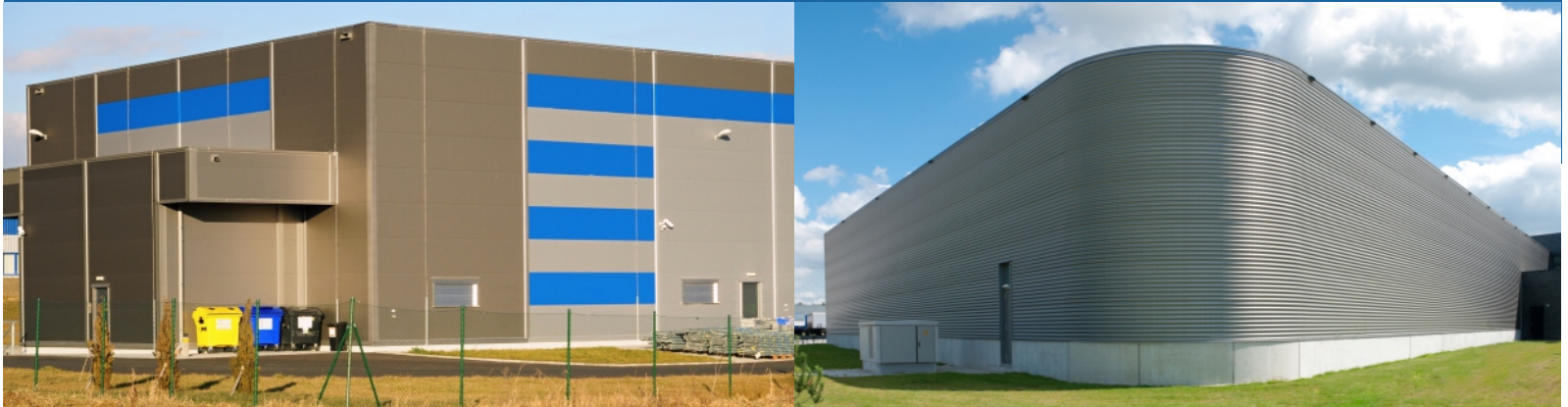
Entry Points for machine, material, people

Colours as per choice and availability



- Receive our Best Offer
- Place the order
- We deliver your Project

Customer Care : +91 900 789 1111



Corporate Office

Droit Steel Buildings Private Limited

3A, Ram Mohan Mullick Garden Lane, Raikva Building, 4th Floor Unit - 4, Kolkata-700 010, (India)

Phone: +91 33 66044777 | +91 33 23741999

Works

Droit Steel Buildings Private Limited

Vill. - Shyamsundarpur, PO - Darika, PS. - Bishnupur, Dist. - Bankura, PIN - 722 122

Phone: +91 9007881111 | factory@durakolor.com

Toll Free: 1800 345 01 01

info@droitsteelbuildings.com